

# IRON SOUNDS

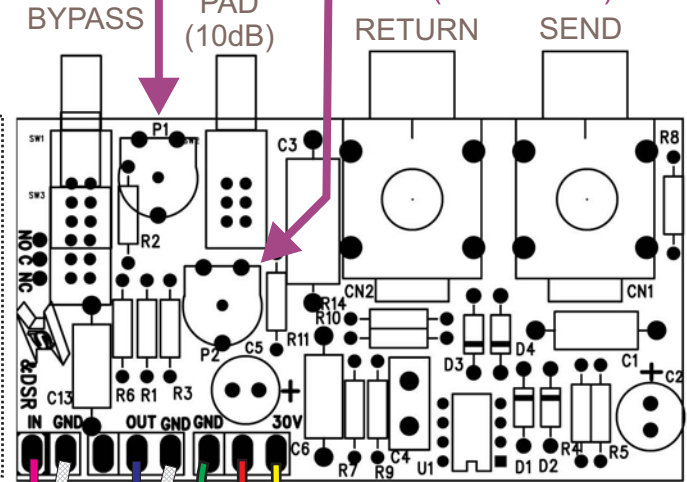
## EFFECTS LOOP INSTALLATION DIAGRAM v1.0

Optional Input  
Level Trimmer (P1)

Optional Output  
Level Trimmer (P2)

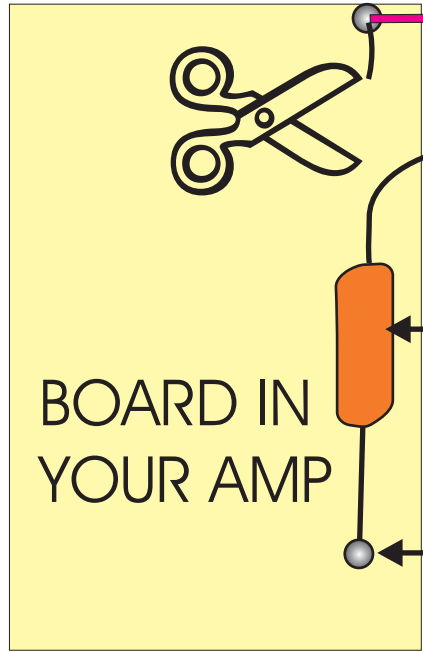
\* If optional level trimmers are used do not assemble SW2 (PAD switch) and resistors R2 and R11.

YOU MAY RELOCATE THIS PART OF THE PCB BY SNAPPING IT OFF.

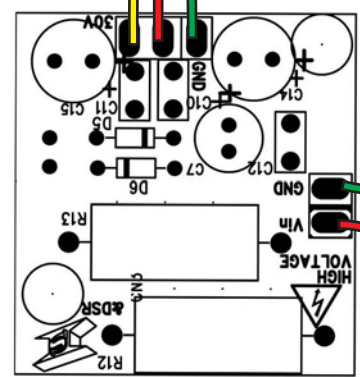


Do not connect shield on this side

Do not connect shield on this side



This is the filter input capacitor to your phase splitter in your amp.



**BOARD IN YOUR AMP**

Connect **GND** to a ground spot in the same general area as **Vin**. A bad spot will make the loop noisy.

Connect **Vin** to the second filter (AFTER the first filtering RC network) in your amp.